



Kährs[®]



UPOFLOOR

ESTRAD SAFETY

KÄHRS UPOFLOOR

ESTRAD SAFETY R11/45+

Safety R11/45+ is ideal for areas with a high risk of slipping and where splashing can occur. These Safety floors are designed for public, industrial and residential use where slip-resistant flooring is required. Friction particles give the floor properties that allow the friction rating to withstand throughout the entire lifespan of the product. Typical application areas include floors in the lobbies, hallways and ramps in assisted-living homes, health centers, hospitals, restaurant/cafeteria facilities, treatment facilities, washing/changing rooms, toilet facilities, food-preparation facilities and kitchens. The matte-surfaced Safety R11/45+ flooring is ideal for use in facilities for the memory-impaired where non-reflective surfaces are needed.

- A new, completely unicolor collection where the color of the friction particles matches the base colour to ensure a beautiful finish
- The collection is available in 13 colors
- The product has a low-maintenance PUR
- Low VOC emissions
- Friction particles allow the friction rating to withstand throughout the entire lifespan of the product
- A flexible product that can also be coved to wall
- Suitable for use with underfloor heating (up to 27°C or 81°F)

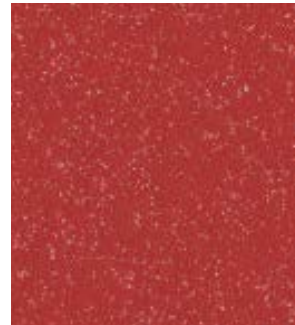
7766 Bright Jade

Cover: Kährs Upofloor Estrad Safety R11/50+

7749 Deep Space

7746 Milkyway Beige

KÄHRS UPOFLOOR
ESTRAD SAFETY R11/45+



7754 Red Jasper
NCS S 2070-Y90R LRV 14



7755 Citrine
NCS S 1070-Y LRV 54



7766 Bright Jade
NCS S 3040-G30Y LRV 28



7765 Ozone Blue
NCS S 2020-B LRV 44



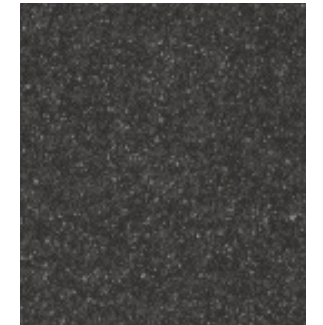
7764 Blue Agate
NCS S 3020-R90B LRV 29



7756 Grain Gray
NCS S 3000-N LRV 43



7757 Shale Gray
NCS S 4500-N LRV 25



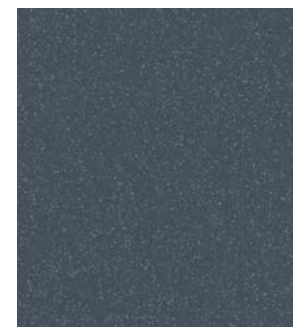
7758 Obsidian
NCS S 8000-N LRV 7



7759 Gneiss Gray
NCS S 5500-N LRV 21



7760 Rock
NCS S 6502-R LRV 12



7763 Stardust
NCS S 6010-R90B LRV 12



7762 Pebble
NCS S 3005-Y20R LRV 43



7761 Sand Stone
NCS S 4010-Y50R LRV 33



KÄHRS UPOFLOOR

ESTRAD SAFETY R11/50+ WET ROOM

Safety R11/50+ has been specially developed for changing-room facilities, wet areas, shower rooms, spas, saunas, swimming pool environments, constantly damp rooms in nursing homes, student homes, specialised care, health care and special housing, i.e., for areas requiring efficient slip resistance. In wet areas, in addition to water, also where body wash and shampoo residues increase the risk of slipping.

- A new, completely unicolor collection where the colour of the friction particles matches the base color to ensure a beautiful finish
- The flooring feels comfortable underfoot and it is safe while wearing shoes as well as bare feet
- The collection is available in 6 colors
- Meets the requirements in environments with a high slip hazard
- An excellent alternative to ceramic tiles, the flooring improves safety in areas that are constantly wet and where you walk barefoot
- The product has a low-maintenance PUR surface
- Low VOC emissions
- A flexible product that can also be coved to wall
- Suitable for use with underfloor heating (up to 27°C or 81°F)
- No mortar seams, unlike with ceramic tiles, where dirt can accumulate in the seams
- Complies with the requirements of standard EN 13553 on resilient floor coverings, where welding is required for making the floor watertight

KÄHRS UPOFLOOR
ESTRAD SAFETY R11/50+ WET ROOM



7748 Earth Blue
NCS S 2030-R90B LRV 31



7750 Mercury Gray
NCS S 3000-N LRV 46



7746 Milkyway Beige
NCS S 1502-Y50R LRV 60



7747 Light Blue
NCS S 2010-B LRV 46



7751 Meteorite Gray
NCS S 5000-N LRV 26



7749 Deep Space
NCS S 6010-R90B LRV 12



7749 Deep Space
7746 Milkyway Beige



KÄHRS UPOFLOOR

ESTRAD SAFETY R10/36+

Safety R10/36+ is ideal for heavy-wear areas with water-supply points or other risks, such as slippery floors caused by water, ice, snow, grease and detergents. Typical sites include schools, health centers and assisted-living facilities. The product is suitable for hallways, reception areas, hospital wards, assisted-living homes, shops, bars, cafés and storage facilities.

The product is durable even in areas of heavy traffic in both commercial environments as well as in residential and industrial environments.

- The collection can also be used in combination with other collections, such as the Safety R11/45+
- Available in neutral grey tones and new stylish wood designs
- The product has a low-maintenance PUR surface
- The new wood design includes an almost invisible friction surface
- Due to added aluminium oxide particles, the durable, non-slip surface will also be retained when wet throughout the entire lifespan of the product
- Welded seams will ensure water-impermeable and dirt-repellent seams
- A flexible product that can also be covered to wall
- Low VOC emissions
- Suitable for use with underfloor heating (up to 27°C or 81°F)

KÄHRS UPOFLOOR
ESTRAD SAFETY R10/36+

WOOD



7767 Grayish Black
LRV 7



7770 Light Brown
LRV 29

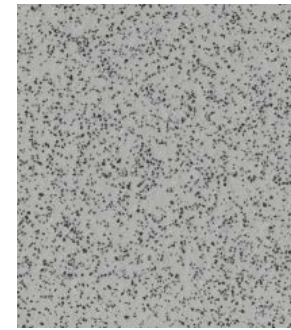


7768 Faded Beige
LRV 31

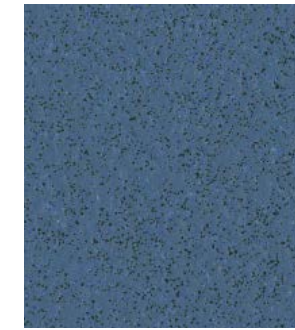


7769 Mid Brown
LRV 30

UNI



7740 Winter Gray
NCS S 3502-B LRV 37



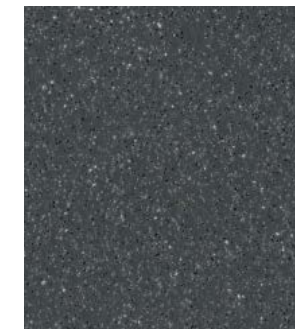
7742 Cyklon Blue
NCS S 5020-R80B LRV 15



7741 Mountain Gray
NCS S 4500-N LRV 27



7743 Smoke Gray
NCS S 5005-B20G LRV 24



7744 Lava Gray
NCS S 7502-B LRV 10



7745 Basalt Black
NCS S 8505-Y20R LRV 6



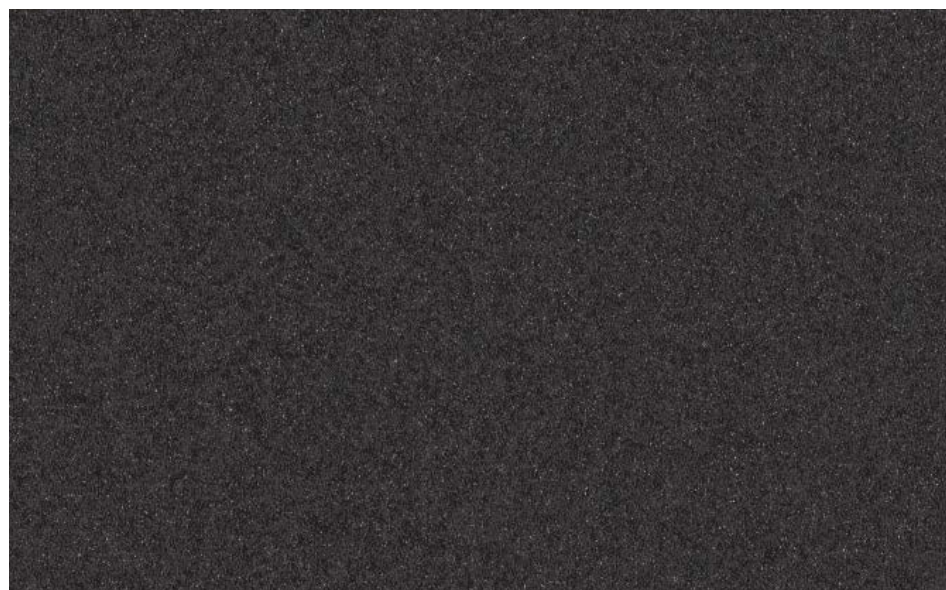
KÄHRS UPOFLOOR

ESTRAD SAFETY R12/45+

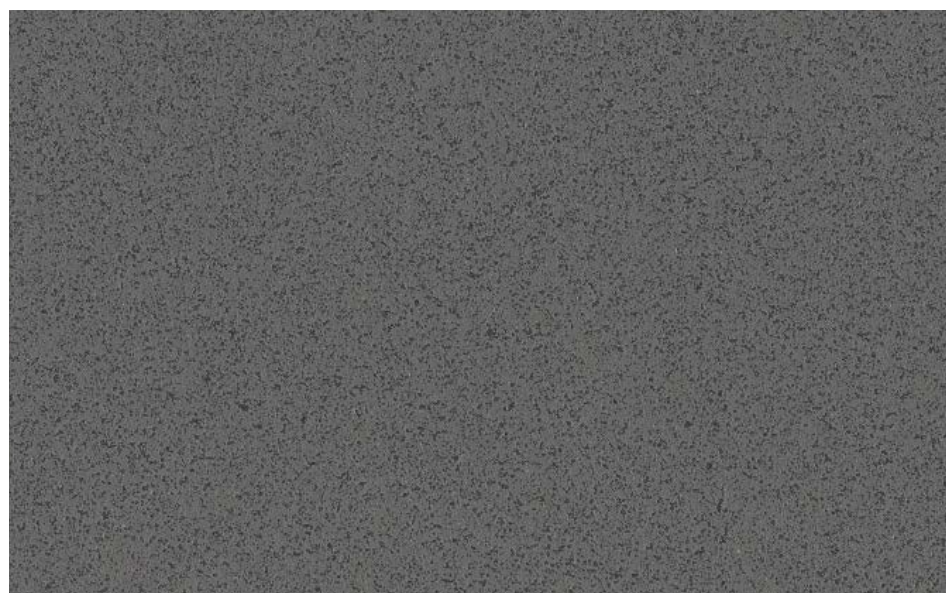
Safety R12/45+ is ideal for large institutional and distribution kitchens, such as restaurants and other food-processing facilities, as well as spaces where you may have a lot of grease splashes caused by cooking.

- Low VOC emissions
- Thickness 2.5 mm
- Friction particles allow the friction rating to withstand throughout the entire lifespan of the product

KÄHRS UPOFLOOR
ESTRAD SAFETY R12/45+



7753 Eclipse Black
 NCS S 8000-N LRV 6







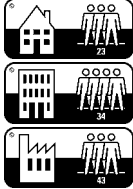





7752 Galaxy Gray
 NCS S 6500-N LRV 15

WELDING RODS

100 m/roll





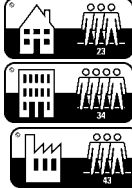






COLLECTION COLOUR	WELDING ROD COLOUR
7740 / 7750	52SF2090
7741	52SF9200
7742	52SF4910
7743	52SF8680
7744	52SF4490
7746	52SF5766
7748	52SF5206
7752	52SF4610
7754	52SF5232
7755	52SF9947
7756	52SF9858
7759	52SF5233
7760	52SF5204
7761	52SF5213
7762	52SF5212
7764	52SF5208
7766	52SF7766
7767	52SF9842
7768	52SF3372
7769	52SF9831
7770	52SF3330
7745 / 7753 / 7758	52SF8640
7747 / 7765	52SF5205
7749 / 7763	52SF5207
7751 / 7757	52SF5764

PRODUCT DATA SHEET KÄHRS UPOFLOOR
ESTRAD SAFETY R11/45+

PROPERTY	TEST METHOD	RESULT
 Thickness	EN 428 / ISO 24346	2.0 mm
 Weight	EN 430 / ISO 23997	2600 g/m ²
 Roll Length	EN 426 / ISO 24341	20 m
 Width	EN 426 / ISO 24331	2 m
General Performance	EN 13845 ASTM F1303	Conforms Conforms
Use Area	EN 685 / ISO 10874 23 / 34 / 43	
 Resistance to Chemicals	EN 423	Good chemical resistance
 Reaction to Fire	EN 13501-1 ASTM E648 AUS NCC SPEC C1.10-3	Class Bfl-S1 Class 1 Complies
 Abrasion Resistance	EN 13845 EN 649	50,000 cycles Group T
 Enhanced Slip Resistance	EN 13845 AS 4586 APPENDIX A AS 4586 APPENDIX D DIN 51130 RRL PENDULUM TEST SURFACE ROUGHNESS	ESf P4 R11 R11 ≥ 45 (wet test - 4S Rubber/ Slider 96) Rz ≥ 20 µm
 Electrical Behaviour (body voltage)	EN 1815	≤ 2 kV Classified as 'antistatic'
VOC Emissions	FLOORSCORE FINNISH M1 CLASSIFICATION	Certified Certified






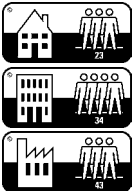







PRODUCT DATA SHEET KÄHRS UPOFLOOR
ESTRAD SAFETY R11/50+ WET ROOM





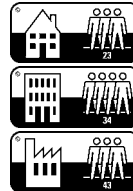





PROPERTY	TEST METHOD	RESULT
 Thickness	EN 428 / ISO 24346	2.0 mm
 Weight	EN 430 / ISO 23997	2700 g/m ²
 Roll Length	EN 426 / ISO 24341	20 m
 Width	EN 426 / ISO 24341	2 m
General Performance	EN 13845 ASTM F1303	Conforms Conforms
Use Area	EN 685 / ISO 10874 23 / 34 / 43	
 Resistance to Chemicals	EN 423	Good chemical resistance
 Water Tightness	EN 13553 ANNEX A	Watertight
 Reaction to Fire	EN 13501-1 ASTM E648 AUSTRALIAN BCA SPEC C1.10-3	Class Bfl-S1 Class 1 Complies
 Abrasion Resistance	EN 13845 EN 649	50,000 cycles Group T
 Enhanced Slip Resistance	EN 13845 AS 4586 APPENDIX A AS 4586 APPENDIX C AS 4586 APPENDIX D DIN 51097 DIN 51130 RRL PENDULUM TEST SURFACE ROUGHNESS	ESb & ESf P4 Class B R11 Class B R11 ≥ 50 (wet test - 4S Rubber/ Slider 96) Rz ≥ 20 µm
 Electrical Behaviour (body voltage)	EN 1815	≤ 2 kV Classified as 'antistatic'
VOC Emissions	FLOORSCORE FINNISH M1 CLASSIFICATION	Certified Certified



PRODUCT DATA SHEET KÄHRS UPOFLOOR
ESTRAD SAFETY R10/36+

PROPERTY	TEST METHOD	RESULT
 Thickness	EN 428 / ISO 24346	2.0 mm
 Wear Layer	EN 429 / ISO 24340	WOOD: 0.70mm
 Weight	EN 430 / ISO 23997	WOOD: 2780 g/m ² UNI: 2430 g/m ²
 Roll Length	EN 426 / ISO 24341	20 m
 Width	EN 426 / ISO 24341	2 m
General Performance	EN 13845 ASTM F1303	Conforms Conforms
Use Area	EN 685 / ISO 10874 23 / 34 / 43	
 Resistance to Chemicals	EN 423	Good chemical resistance
 Reaction to Fire	EN 13501-1 ASTM E648	Class Bfl-S1 Class 1
 Abrasion Resistance	EN 13845 EN 649	50,000 cycles Group T
 Enhanced Slip Resistance	EN 13845 AS 4586 DIN 51130 RRL PENDULUM TEST SURFACE ROUGHNESS	ESf R10 R10 ≥ 36 (wet test - 4S Rubber/ Slider 96) Rz ≥ 20 µm
 Electrical Behaviour (body voltage)	EN 1815	≤ 2 kV Classified as 'antistatic'
WOOD: VOC Emissions	FLOORSCORE FINNISH M1 CLASSIFICATION	Certified Certified
UNI: VOC Emissions	FLOORSCORE FINNISH M1 CLASSIFICATION	Certified Certified

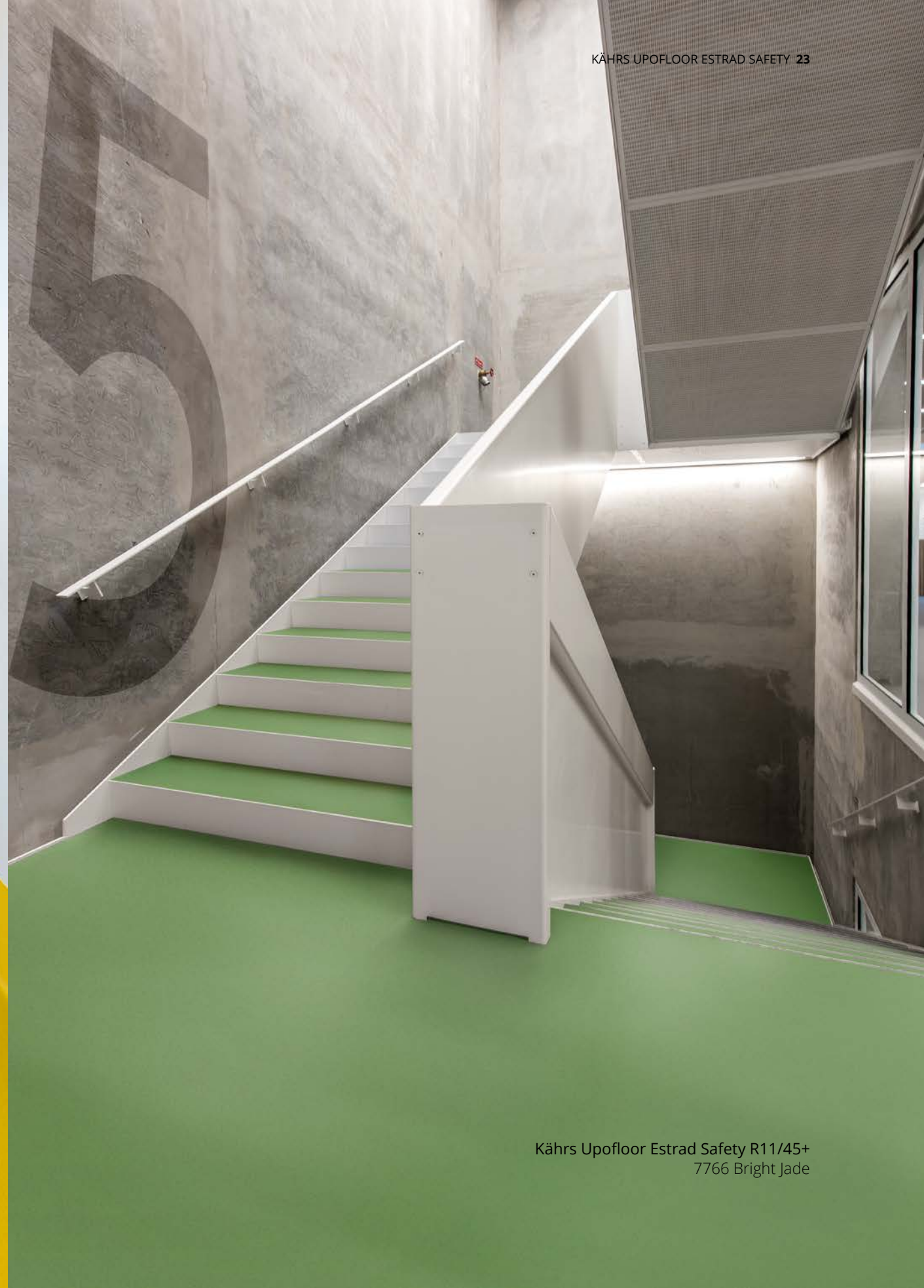
PRODUCT DATA SHEET KÄHRS UPOFLOOR
ESTRAD SAFETY R12/45+

PROPERTY	TEST METHOD	RESULT
 Thickness	EN 428 / ISO 24346	2.5 mm
 Weight	EN 430 / ISO 23997	3150 g/m ²
 Roll Length	EN 426 / ISO 24341	20 m
 Width	EN 426 / ISO 24341	2 m
General Performance	EN 13845 ASTM F1303	Conforms Conforms
Use Area	EN 685 / ISO 10874 23 / 34 / 43	
 Resistance to Chemicals	EN 423	Good chemical resistance
 Reaction to Fire	EN 13501-1 ASTM E648	Class Bfl-S1 Class 1
 Abrasion Resistance	EN 13845 EN 649	50,000 cycles Group T
 Enhanced Slip Resistance	EN 13845 AS 4586 DIN 51130 RRL PENDULUM TEST UNE-ENV 12633	ESf R12 R12 ≥ 45 (wet test - 4S Rubber/ Slider 96) Class 3 (Slider 96)
 Electrical Behaviour (body voltage)	EN 1815	≤ 2 kV Classified as 'antistatic'
VOC Emissions	FLOORSCORE FINNISH M1 CLASSIFICATION	Certified Certified





Kährs Upofloor Estrad Safety R11/45+
7755 Citrine



Kährs Upofloor Estrad Safety R11/45+
7766 Bright Jade



FLOORS BEYOND EXPECTATIONS

www.kahrsflooring.com